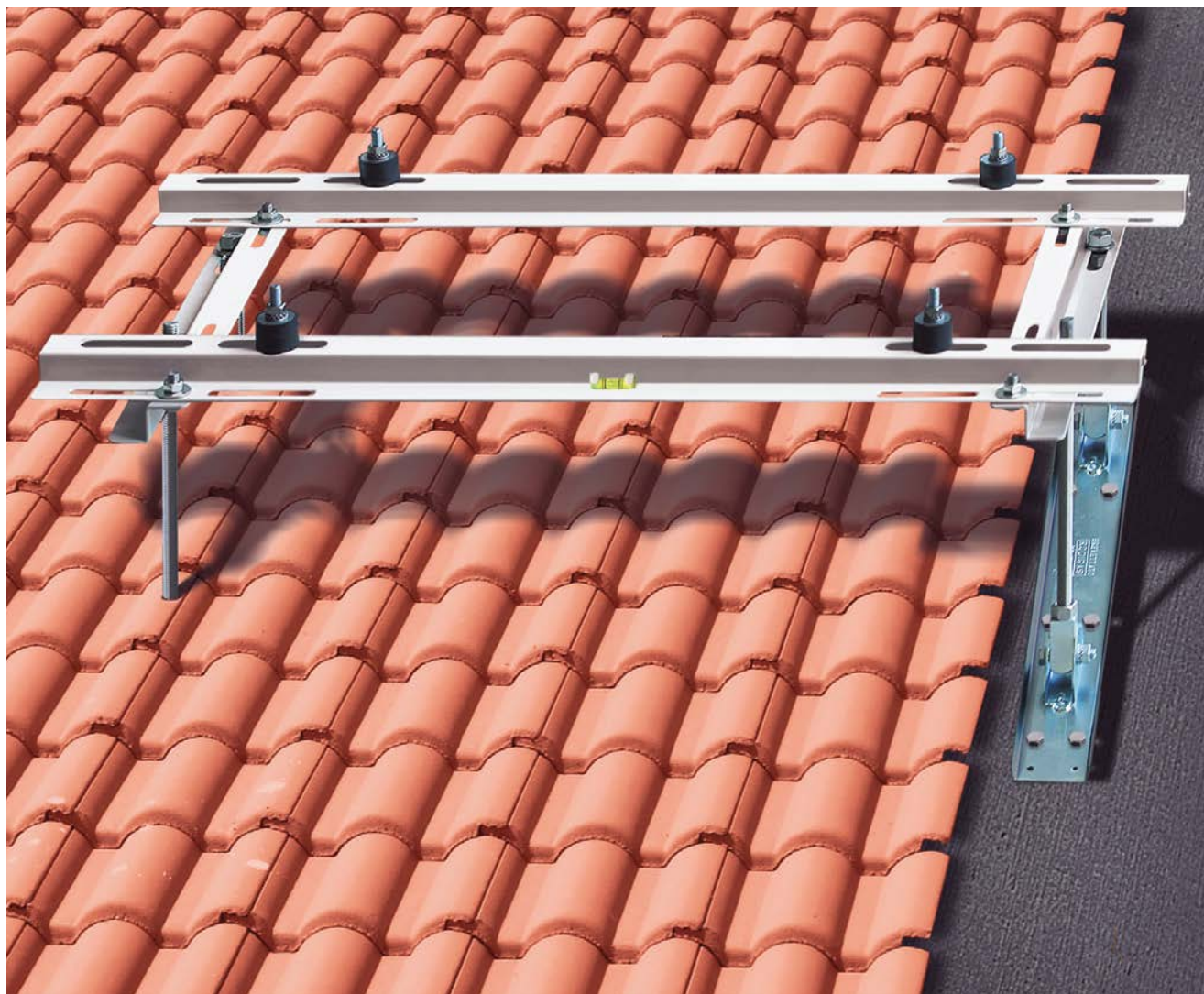


# DATA SHEET

## MT 600

ROOF BRACKETS

MENSOLE DA TETTO



### MATERIALS AND TREATMENT

- Material:** electro-galvanised steel
- Treatment:** epoxy resins in polyester for outdoor
- Colour:** Ral 9002
- Adjustable bars:** M12 stainless steel threaded stumps
- Bolts and nuts:** stainless steel

### LOAD CAPACITY

- Domestic use:** 140 Kg
- Load testing weight:** 420 Kg

### BOX

- Pack:** carton box
- Pieces:** 1
- Pack dimensions:** 980x85x980 mm
- Case weight:** 5.0 kg

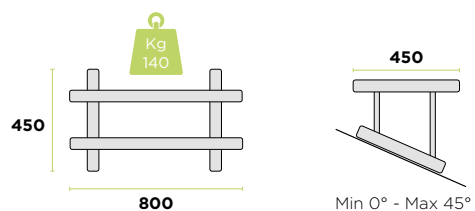
### PALLET

- Pallet dimensions:** 106x106x100 cm
- Pieces per pallet:** 108
- Pallet total weight:** 550 kg

Rodigas S.r.l.  
via Giacomelli, 10  
35010 Limena  
(PADOVA) ITALY  
Tel +39 049 8840056  
Fax +39 049 8840060  
info@rodigas.it  
www.rodigas.it



### DIMENSIONS AND LOADING CAPACITY



### BRACKET DRILLING DIAGRAM

