

# Arma-Chek<sup>®</sup> Silver

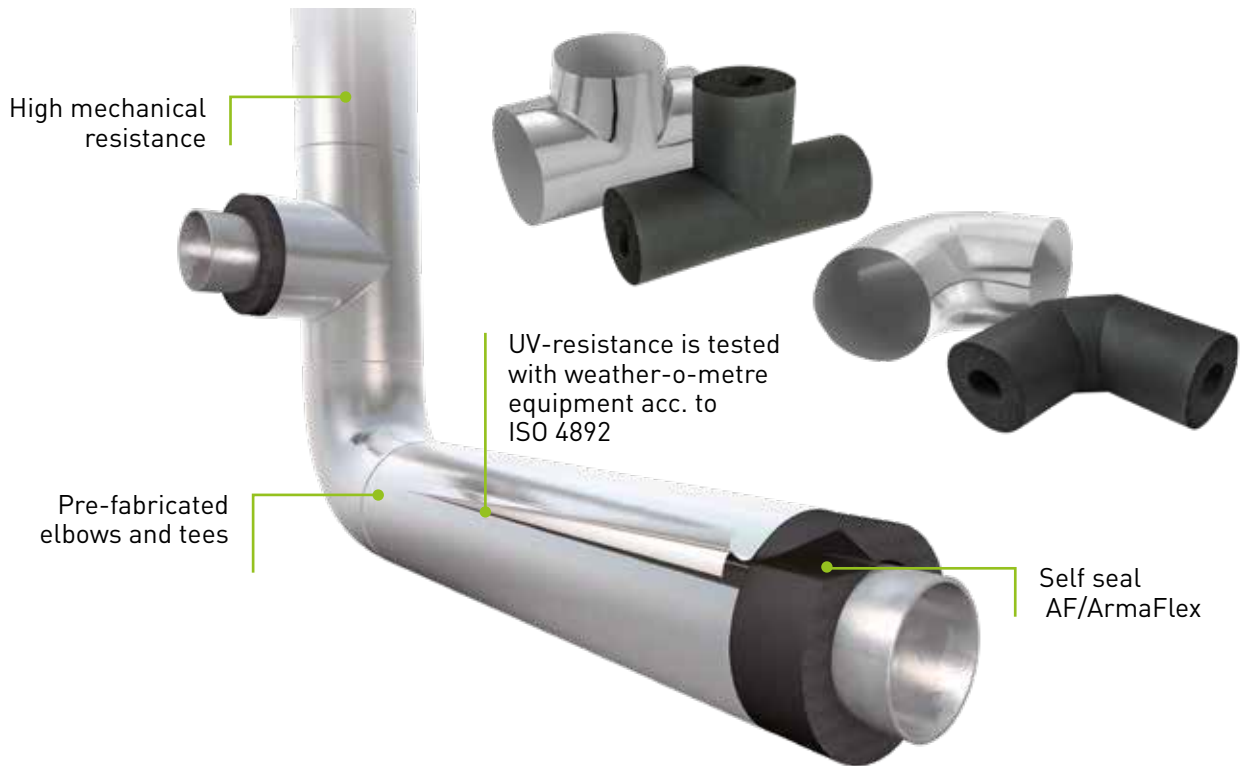
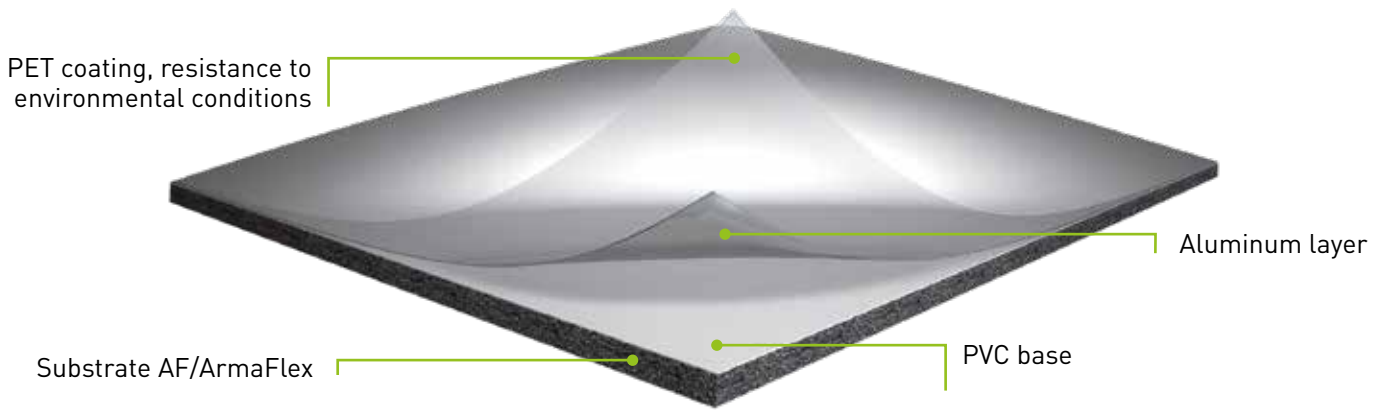


## THE PRE-COVERED ARMAFLEX INSULATION DESIGNED FOR FAST INSTALLATION, DURABILITY AND EASY CLEANING

- Suitable for food production areas
- 2-in-1 pre-covered system, saves installation time compared to traditional cladding
- System solution with matching tape and pre-formed elbow and tee parts
- Easy to clean aesthetic surface in metallic look
- Light weight and flexible
- Strong and resistant surface
- Good chemical resistance



# PROPERTIES



## PREFORMED PIECES

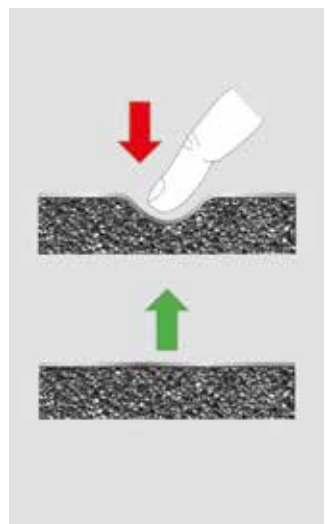
Specially designed pre-formed Arma-Chek Silver elbows and bends allow additional savings in installation time.

Arma-Chek Silver



## RESISTANCE TO SURFACE PRESSURE

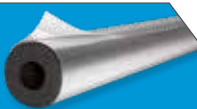
Unlike traditional metal coatings, Arma-Chek Silver recovers its original shape by itself after being subjected to surface pressure. This property prevents permanent dents and guarantees a durable installation



RANGE

TUBE

Pre-covered self-adhesive tube



SHEET

Pre-covered continuous sheet, Self-adhesive pre-covered continuous sheet, Covering foil



TEES & ELBOWS

Pre-fabricated tees and elbows (insulation and covering)



COVERING



TAPE



RECOMMENDED PRODUCTS

For a complete installation



ArmaFlex 520 adhesive



ArmaFlex RS850 adhesive



ArmaFlex Cleaner

## TECHNICAL DATA

Arma-Chek Silver is a covering system featuring a double layer laminate of aluminium, coated with special UV protection and a PVC backing. As a covering for Armaflex substrates, Arma-Chek Silver jacketing is highly puncture and tear resistant as well as flame retardant. Arma-Chek Silver can be used for insulation and protection of HVAC and Refrigeration systems inside or outside.

<b>Material type</b>	Insulation: Highly flexible, closed-cell elastomeric foam material based on synthetic rubber. Covering: double layer laminate of aluminium, coated with a special UV protection and a PVC backing.
<b>Colour</b>	Silver (covering)
<b>Applications</b>	Insulation and protection of pipes, ducts, valves and vessels of refrigeration and air conditioning equipments, clean room environments, food industries etc.
<b>Special features</b>	Declaration of Performance is available in accordance with Article 7(3) of Regulation (EU) No 305/2011 on our homepage: <a href="http://www.armacell.com/DoP">www.armacell.com/DoP</a>
<b>Assembly</b>	The ArmaFlex and Arma-Chek installation manuals should be consulted before assembly. We offer special installation courses for the application of Arma-Chek. Please consult our Customer Service centre.
<b>Remarks</b>	For outdoor use please note: Testing regarding UV resistance of these materials showed excellent results. When used on outdoor applications the materials showed very good durability even under UV exposition. However, due to the unpredictable nature of outdoor conditions there might be occasional weathering influences on the material consistency, which cannot be tested in advance. Therefore, installations in extreme environments (regions of extreme weather conditions like high mountains etc.) are not recommended. In case of doubt please contact our Customer Service centre.

Property	Value/Assessment	Test	Standards & Remarks
<b>Temperature Range</b>			
Max service temperature	+110 °C for substrate (+85 °C if used on flat surfaces) +75 °C for the silver jacketing		Tested acc to EN 14706 & EN 14707 & EN 14304
Min service temperature	-50 °C		
<b>Thermal Conductivity</b>			
	Depends on the Armaflex substrate used.	EU 5695 EU 6430	Tested acc. to EN ISO 13787 DIN EN 12086 & EN ISO 8497
<b>Water Vapour Diffusion Resistance</b>			
	$\mu \geq 15,000$	EU 5695 EU 6430	Tested acc.to EN ISO 12086 & EN 13469
<b>Fire Performance</b>			
Reaction to fire	Arma-Chek Silver (AF) tubes	C <sub>L</sub> -s3, d0	EU 5695 EN 13823 EN ISO 11925-2
	Arma-Chek Silver (AF) sheets 13 - 25 mm	C-s3, d0	
	Arma-Chek Silver (AF) sheets 32 - 50 mm	D-s3, d0	
	Covering foil	Class 1	GB 5902
Class 0		GB 5903	Tested acc. to BS 476-6
<b>Other technical features</b>			
Dimensions & tolerances	In accordance with EN 14304, table 1	EU 5695 EU 6430	Tested acc. to EN 822, EN 823 & EN 13467
Weight	approx. 340 g/m <sup>2</sup> (covering)		Tested acc. to EN 22286
Material thickness	approx. 230 $\mu$ m		Tested according to EN 22286
UV resistance	Excellent		Tested according to EN ISO 4892-2 (Xenon-Test)
Resistance to mechanical impact	Good puncture and tear resistance.		
Health aspects	Dust and fibre free		
Storage & Shelf life	Tape, sheets, tubes, self-adhesive: 1 year		Stored in clean rooms at normal relative humidity (50% to 70%) and ambient temperature (0 °C - 35 °C )

# PRE-COVERED SELF-ADHESIVE TUBES

Length - 1m, Colour - black, Covering colour - Silver



Pipe max. Outside - Ø (mm)	Inner tube Ø min/max (mm)	AF-2 INSULATION THICKNESS 11.5 - 16 (mm)				AF-4 INSULATION THICKNESS 17 - 25 (mm)			
		Thickness (mm)	Code	m/carton		Thickness (mm)	Code	m/carton	
15	16 - 17.5	11.5	AFSI-2-015 • •	62		17	AFSI-4-015 •	40	
18	19 - 20.5	11.5	AFSI-2-018 •	60		17.5	AFSI-4-018 •	30	
22	23 - 24.5	12	AFSI-2-022 •	48		18	AFSI-4-022 •	28	
28	29 - 30.5	12.5	AFSI-2-028 •	40		19	AFSI-4-028 •	24	
35	36 - 38	13	AFSI-2-035 •	30		19.5	AFSI-4-035 •	18	
42	43.5 - 45.5	13.5	AFSI-2-042 •	20		20.5	AFSI-4-042 •	16	
48	49.5 - 51.5	13.5	AFSI-2-048 •	20		21	AFSI-4-048 •	12	
54	55 - 57	13.5	AFSI-2-054 •	16		21	AFSI-4-054 •	12	
60	61.5 - 63.5	14	AFSI-2-060 •	16		21.5	AFSI-4-060 •	10	
64	65 - 67.5	14	AFSI-2-064 •	14		21.5	AFSI-4-064 •	9	
76	77 - 79.5	14	AFSI-2-076 •	14		22	AFSI-4-076 •	8	
89	90.5 - 93.5	14.5	AFSI-2-089 •	10		22.5	AFSI-4-089 •	6	
114	116 - 120	15	AFSI-2-114 • •	8		23.5	AFSI-4-114 • •	5	
140	142 - 146	15.5	AFSI-2-140 • •	4		24.5	AFSI-4-140 • •	3	
168	170 - 176	16	AFSI-2-168 • •	3		25	AFSI-4-168 • •	2	

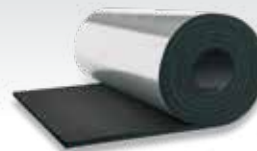
Pipe max. Outside - Ø (mm)	Inner tube Ø min/max (mm)	AF-5 INSULATION THICKNESS 25 - 33 (mm)			
		Thickness (mm)	Code	m/carton	
18	19 - 20.5	25	AFSI-5-018 •	21	
22	23 - 24.5	25	AFSI-5-022 •	18	
28	29 - 30.5	25	AFSI-5-028 •	18	
35	26 - 38	27	AFSI-5-035 •	12	
42	43.5 - 45.5	27	AFSI-5-042 •	11	
48	49.5 - 51.5	27.5	AFSI-5-048 •	8	
54	55 - 57	28.5	AFSI-5-054 •	8	
60	61.5 - 63.5	29	AFSI-5-060 •	6	
64	65 - 67.5	29	AFSI-5-064 •	6	
76	77 - 79.5	30	AFSI-5-076 •	5	
89	90.5 - 93.5	30.5	AFSI-5-089 •	4	
114	116 - 120	31.5	AFSI-5-114 • •	3	
140	142 - 146	32	AFSI-5-140 • •	3	
168	170 - 176	33	AFSI-5-168 • •	2	

## Other information and remarks

- This item is not self-adhesive, radial cut surface.
- Not a stock item

## PRE-COVERED CONTINUOUS SHEET (ROLLS)

Width - 1m, Colour - black, Covering colour - Silver



Code	Thickness (mm)	Roll Length (m)	m <sup>2</sup> /carton
AFSI-13MM/E •	13	8	8
AFSI-19MM/E •	19	6	6
AFSI-25MM/E •	25	4	4
AFSI-32MM/E •	32	3	3

## SELF-ADHESIVE PRE-COVERED CONTINUOUS SHEET (ROLLS)

Width - 1m, Colour - black, Covering colour - Silver



Code	Thickness (mm)	Roll Length (m)	m <sup>2</sup> /carton
AFSI-13MM/EA •	13	8	8
AFSI-19MM/EA •	19	6	6
AFSI-25MM/EA •	25	4	4
AFSI-32MM/EA •	32	3	3

## COVERING FOIL (ROLLS)

Colour - Silver



Code	Width (mm)	Roll Length (m)	Rolls carton	m <sup>2</sup> /carton
ACH-SI25 •	1040	25	2	52
ACH-SI25/100 •	100	25	4	10

Other information and remarks	
Length tolerance for tubes	± 1.5%
Length tolerance for sheet	± 1.5% to 5%
Thickness tolerance for tubes	≤ 8mm ± 1mm 9 - 18mm ± 1.5mm 19-31 ± 2.5mm > 31mm ± 3mm
Thickness tolerance for sheet	≤ 6mm ± 1mm 7-19mm ± 1.5mm > 19mm ± 2mm
<ul style="list-style-type: none"> <li>• This item is not self-adhesive, radial cut surface.</li> <li>• Not a stock item</li> </ul>	

# PRE-FABRICATED ELBOW COVERING

Colour - Silver, Elbow fitting (covering without insulation)



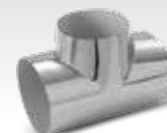
Pipe max. Outside - Ø (mm)	AF-2 INSULATION THICKNESS 11.5 - 16 (mm)			AF-4 INSULATION THICKNESS 15.5 - 25 (mm)		
	Code	m/carton		Code	m/carton	
15	ACHB-040 •	1		ACHB-050 •	1	
18	ACHB-040 •	1		ACHB-060 •	1	
22	ACHB-050 •	1		ACHB-060 •	1	
28	ACHB-050 •	1		ACHB-070 •	1	
35	ACHB-060 •	1		ACHB-080 •	1	
42	ACHB-070 •	1		ACHB-080 •	1	
48	ACHB-080 •	1		ACHB-090 •	1	
54	ACHB-080 •	1		ACHB-100 •	1	
60	ACHB-090 •	1		ACHB-110 •	1	
64	ACHB-100 •	1		ACHB-110 •	1	
76	ACHB-110 •	1		ACHB-120 •	1	
89	ACHB-130 •	1		ACHB-140 •	1	
114	ACHB-150 •	1		ACHB-160 •	1	
140	ACHB-180 •	1		ACHB-200 •	1	
168	ACHB-210 •	1		ACHB-220 •	1	

Pipe max. Outside - Ø (mm)	AF-5 INSULATION THICKNESS 25 - 32 (mm)		
	Code	m/carton	
18	ACHB-070 •	1	
22	ACHB-080 •	1	
28	ACHB-080 •	1	
35	ACHB-090 •	1	
42	ACHB-100 •	1	
48	ACHB-100 •	1	
54	ACHB-110 •	1	
60	ACHB-120 •	1	
64	ACHB-120 •	1	
76	ACHB-130 •	1	
89	ACHB-160 •	1	
114	ACHB-180 •	1	
140	ACHB-210 •	1	
168	ACHB-230 •	1	



# PRE-FABRICATED T-PIECES COVERING

Colour - Silver, Elbow fitting (covering without insulation)



Pipe max. Outside - Ø (mm)	AF-2 INSULATION THICKNESS 11.5 - 16 (mm)			AF-4 INSULATION THICKNESS 17 - 25 (mm)		
	Code	m/carton		Code	m/carton	
18				ACHT-052 •	1	
22	ACHT-052 •	1		ACHT-057 •	1	
28	ACHT-052 •	1		ACHT-067 •	1	
35	ACHT-057 •	1		ACHT-073 •	1	
42	ACHT-067 •	1		ACHT-082 •	1	
48	ACHT-073 •	1		ACHT-093 •	1	
54	ACHT-082 •	1		ACHT-100 •	1	
60	ACHT-088 •	1		ACHT-102 •	1	
64	ACHT-100 •	1		ACHT-108 •	1	
76	ACHT-102 •	1		ACHT-120 •	1	
89	ACHT-116 •	1		ACHT-136 •	1	
114	ACHT-149 •	1		ACHT-156 •	1	
140	ACHT-176 •	1		ACHT-189 •	1	
168	ACHT-214 •	1		ACHT-214 •	1	

Pipe max. Outside - Ø (mm)	AF-5 INSULATION THICKNESS 25 - 33 (mm)		
	Code	m/carton	
18	ACHT-067 •	1	
22	ACHT-073 •	1	
28	ACHT-082 •	1	
35	ACHT-093 •	1	
42	ACHT-093 •	1	
48	ACHT-100 •	1	
54	ACHT-102 •	1	
60	ACHT-116 •	1	
64	ACHT-120 •	1	
76	ACHT-128 •	1	
89	ACHT-140 •	1	
114	ACHT-169 •	1	
140	ACHT-194 •	1	
168	ACHT-245 •	1	

# PRE-FABRICATED ELBOWS

Colour - Black, AF/Armaflex insulation (matching elbow covering sold separately)



Pipe max. Outside - Ø (mm)	AF-2 INSULATION THICKNESS				AF-4 INSULATION THICKNESS			
	Code	Thickness (mm)	Article description	Pieces/carton	Code	Thickness (mm)	Article description	Pieces/carton
15	AF-2-015-C90 •	11.5	3 segment	3	AF-4-015-C90 •	17	3 segment	3
18	AF-2-018-C90 •	11.5	3 segment	3	AF-4-018-C90 •	17.5	3 segment	3
22	AF-2-022-C90 •	12	3 segment	3	AF-4-022-C90 •	18	3 segment	3
28	AF-2-028-C90 •	12.5	3 segment	3	AF-4-028-C90 •	19	3 segment	3
35	AF-2-035-C90 •	13	3 segment	3	AF-4-035-C90 •	19.5	3 segment	3
42	AF-2-042-C90 •	13.5	3 segment	3	AF-4-042-C90 •	20.5	4 segment	3
48	AF-2-048-C90 •	13.5	3 segment	3	AF-4-048-C90 •	21	4 segment	3
54	AF-2-054-C90 •	13.5	3 segment	3	AF-4-054-C90 •	21	4 segment	3
60	AF-2-060-C90 •	14	3 segment	3	AF-4-060-C90 •	21.5	4 segment	3
64	AF-2-064-C90 •	14	4 segment	3	AF-4-064-C90 •	21.5	4 segment	3
76	AF-2-076-C90 •	14	4 segment	3	AF-4-076-C90 •	22	4 segment	3
89	AF-2-089-C90 •	14.5	4 segment	3	AF-4-089-C90 •	22.5	4 segment	3

Pipe max. Outside - Ø (mm)	AF-5 INSULATION THICKNESS			
	Code	Thickness (mm)	Article description	Pieces/carton
15	AF-5-015-C90 •	25	3 segment	3
18	AF-5-018-C90 •	25	3 segment	3
22	AF-5-022-C90 •	25	3 segment	3
28	AF-5-028-C90 •	25	4 segment	3
35	AF-5-035-C90 •	27	4 segment	3
42	AF-5-042-C90 •	27	4 segment	3
48	AF-5-048-C90 •	27.5	4 segment	3
54	AF-5-054-C90 •	28.5	4 segment	3
60	AF-5-060-C90 •	29	4 segment	3
64	AF-5-064-C90 •	29	4 segment	3
76	AF-5-076-C90 •	30	4 segment	3
89	AF-5-089-C90 •	30.5	4 segment	3
114	AF-5-114-C90 •	31.5	4 segment	3

## Other information and remarks

- Not a stock item

# PRE-FABRICATED T - PIECES

Colour - Black, AF/Armaflex insulation (matching t-piece covering sold separately)



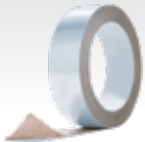
Pipe max. Outside - Ø (mm)	AF-2 INSULATION THICKNESS				AF-4 INSULATION THICKNESS			
	Code	Thickness (mm)	Article description	Pieces/carton	Code	Thickness (mm)	Article description	Pieces/carton
15	AF-2-015-T90 •	11.5	2 segment	3	AF-4-015-T90 •	17	2 segment	3
18	AF-2-018-T90 •	11.5	2 segment	3	AF-4-018-T90 •	17.5	2 segment	3
22	AF-2-022-T90 •	12	2 segment	3	AF-4-022-T90 •	18	2 segment	3
28	AF-2-028-T90 •	12.5	2 segment	3	AF-4-028-T90 •	19	2 segment	3
35	AF-2-035-T90 •	13	2 segment	3	AF-4-035-T90 •	19.5	2 segment	3
42	AF-2-042-T90 •	13.5	2 segment	3	AF-4-042-T90 •	20	2 segment	3
48	AF-2-048-T90 •	13.5	2 segment	3	AF-4-048-T90 •	21	2 segment	3
54	AF-2-054-T90 •	13.5	2 segment	3	AF-4-054-T90 •	21	2 segment	3
60	AF-2-060-T90 •	14	2 segment	3	AF-4-060-T90 •	21.5	2 segment	3
64	AF-2-064-T90 •	14	2 segment	3	AF-4-064-T90 •	21.5	2 segment	3
76	AF-2-076-T90 •	14	2 segment	3	AF-4-076-T90 •	22	2 segment	3
89	AF-2-089-T90 •	14.5	2 segment	3	AF-4-089-T90 •	22	2 segment	3

Pipe max. Outside - Ø (mm)	AF-5 INSULATION THICKNESS			
	Code	Thickness (mm)	Article description	Pieces/carton
15	AF-5-015-T90 •	25	2 segment	3
18	AF-5-018-T90 •	25	2 segment	3
22	AF-5-022-T90 •	25	2 segment	3
28	AF-5-028-T90 •	25	2 segment	3
35	AF-5-035-T90 •	27	2 segment	3
42	AF-5-042-T90 •	27	2 segment	3
48	AF-5-048-T90 •	27.5	2 segment	3
54	AF-5-054-T90 •	28.5	2 segment	3
60	AF-5-060-T90 •	29	2 segment	3
64	AF-5-064-T90 •	29	2 segment	3
76	AF-5-076-T90 •	30	2 segment	3
89	AF-5-089-T90 •	30.5	2 segment	3
89	AF-5-089-T90 •	30.5	2 segment	3

Other information and remarks	
Thickness tolerance for tubes	AF-2 ± 1mm AF-4 ± 1.5mm AF-5 ± 2.5mm
• Not a stock item	

# TAPE

Colour - Silver, Composite aluminium tape



Code	Width (mm)	Roll Length (m)	Thickness (mm)	Rolls/carton	
ACH-PSATAPES-30	30	25	0.08	10	
ACH-PSATAPES-50	50	50	0.08	6	

# ArmaFlex® 520



## TRIED & TESTED FOR SUPERIOR ARMAFLEX RELIABILITY

- Fast drying contact adhesive
- Specially formulated for Armaflex® insulation
- Ensures reliable vapour-tight seal
- For operating temperatures up to +105 °C
- One-component industrial adhesive
- Low viscosity, air drying adhesive

Specially formulated adhesive for insulating Armaflex insulation.	
<b>Material type</b>	Contact adhesive on polychloroprene basis, free of aromatic components.
<b>Colour</b>	Beige
<b>Material special info</b>	Liquid
<b>Applications</b>	Gluing of all flexible ArmaFlex insulation materials (except HT/ArmaFlex & ArmaFlex Ultima).
<b>Special features</b>	Specially formulated adhesive for uniform and safe seam bonding of ArmaFlex insulation materials.
<b>Assembly</b>	Application temperature: ideally +20°C, not below 0°C. At temperatures below +5°C or high humidity approx above 80%), increased condensation may form on the surfaces to be glued or adhesive films. In these cases bonding is poor or impossible. This can be tested by using absorbent paper (blotting or crepe paper). Work should not be carried out on operating plant or areas exposed to strong sunlight. Shake and stir well before use. Apply thinly to the areas to be bonded with a brush or spatula. For contact adhesion press together with force during the contact adhesion time. Detailed application guidance is available.
<b>Remarks</b>	The adhesive achieves its final strength after 36 hours. Only then should plant be put into operation. Never insulate plant which is in operation or work in strong sunlight. Wait 36 hours before applying coatings (exception: ArmaFinish 99), adhesive tape, coverings etc.

# TECHNICAL DATA

Temperature Range	
Max service temperature	+105°C
Min service temperature	-50°C (for temperatures below -50 °C please contact our technical department)
Performance	
Coverage (guidance only)	<p>Minimum consumption with the adhesive applied to both surfaces:</p> <p><b>ArmaFlex tubes</b> (thickness &gt; consumption unslit &gt; consumption slit)</p> <ul style="list-style-type: none"> <li>• 10mm &gt; 1,120m per litre &gt; 140m per litre</li> <li>• 20mm &gt; 280m per litre &gt; 70m per litre</li> <li>• 30mm &gt; 175m per litre &gt; 45m per litre</li> <li>• 40mm &gt; 130m per litre &gt; 35m per litre</li> </ul> <p><b>ArmaFlex Sheets</b></p> <ul style="list-style-type: none"> <li>• 3-4 m<sup>2</sup> per litre</li> </ul>
Storage & shelf life	
12 months. Store as cool as possible but protected from frost. In the event of frost any gelification is reversible on warming	
Preparation of surfaces	
<p>Clean surfaces and ArmaFlex Ultima surface with Armaflex Cleaner.</p> <p>Compatibility with bases:</p> <ul style="list-style-type: none"> <li>• Very good adhesion to metallic surfaces.</li> <li>• The adhesive's compatibility with colour coated surfaces needs to be tested.</li> <li>• Incompatible with asphalt, bitumen and red lead (linseed oil-based)</li> </ul>	
Working time at 20 °C	
Wet adhesion time	Up to 2 minutes
Drying time	3- 5 mins
Contact adhesion	15 - 20 mins
Setting	36 hours
The open time depends on the quantity as well as indoor climate conditions. Before operating plant the setting time needs to be allowed to elapse.	
Other technical features	
Flash point	approx -20 °C
Explosion limits	<b>Lower:</b> approx 1 Vol %, <b>Upper:</b> approx 13 Vol %
Hazard class	Highly flammable, Regulation of inflammable liquids.
Ageing stability	Very good
Resistance to weathering	Very good
Recycling	Allocation of a waste code number, according to the European Waste Catalogue, should be carried out in agreement with the regional waste disposal company. For details see relevant Safety Data Sheet. Packaging must be emptied of all residues. Packaging with traces of cured product can be recycled. Packaging with uncured product must be recycled into new product.
Transport classes	Depending on the type of transport

## ARMAFLEX 520



Code	Description	Pieces/carton	€/pc
ADH-520/0.25E	ArmaFlex 520 0.25 Litre can with brush	24	8.82
ADH-520/0.5E	ArmaFlex 520 0.5 Litre can	12	15.20
ADH-520/1.0E	ArmaFlex 520 1.0 Litre can	12	25.67
ADH-520/2.5E	ArmaFlex 520 2.5 Litre can	8	64.19

# ArmaFlex RS850

## NON-DRIP ADHESIVE FOR FASTER & CLEANER APPLICATIONS.

- Minimum solvent emissions when idle
- Ideal for hard to access areas
- Extended shelf-life
- Reduced solvent content to meet requirements for sustainable building projects
- Superior bonding with Armaflex
- Thixotropic gel based adhesive
- Low viscosity, air drying adhesive



Non-drip one component adhesive in gel form. Specifically developed for ArmaFlex insulation materials based on synthetic rubber.	
<b>Material type</b>	Thixotropic contact adhesive on polychloroprene basis.
<b>Colour</b>	Beige
<b>Material special info</b>	Gel form
<b>Applications</b>	Application on pipes, ducts and tanks with service temperature up to +70 °C. Gluing of all flexible ArmaFlex insulation materials (except HT/ArmaFlex & ArmaFlex Ultima).
<b>Special features</b>	Specially formulated adhesive for uniform and safe seam bonding of ArmaFlex insulation materials.
<b>Assembly</b>	Please observe our installation instructions/product data sheets. Application temperature: ideally +20 °C, not below 0 °C. At temperatures below +5 °C or high humidity approx above 80%), increased condensation may form on the surfaces to be glued or adhesive films. In these cases bonding is poor or impossible. This can be tested by using absorbent paper (blotting or crepe paper). Work should not be carried out on operating plant or areas exposed to strong sunlight. Shake and stir well before use. Apply thinly to the areas to be bonded with a brush or spatula. For contact adhesion press together with force during the contact adhesion time. Detailed application guidance is available.
<b>Remarks</b>	The adhesive achieves its final strength after 24 hours. The system should never be operated during this time and any self-adhesive tape or protective coating (exception: ArmaFinish 99), should only be applied after the time has elapsed.

# TECHNICAL DATA

Temperature Range	
Max service temperature	+70°C
Min service temperature	-40°C
Performance	
Coverage (guidance only)	<p>Minimum consumption with the adhesive applied to both surfaces:  <b>ArmaFlex tubes</b> (thickness &gt; consumption unslit &gt; consumption slit)</p> <ul style="list-style-type: none"> <li>• 10mm &gt; 1,120m per litre &gt; 140m per litre</li> <li>• 20mm &gt; 280m per litre &gt; 70m per litre</li> <li>• 30mm &gt; 175m per litre &gt; 45m per litre</li> <li>• 40mm &gt; 130m per litre &gt; 35m per litre</li> </ul> <p><b>ArmaFlex Sheets</b></p> <ul style="list-style-type: none"> <li>• 3-4 m<sup>2</sup> per litre</li> </ul>
Storage & shelf life	
<p>36 months in an unopened container.            Store between 0°C and 35°C in a dry place. Do not store with explosive substances or spontaneously combusting substances. Store as cool as possible but protected from frost. Cold or frozen adhesive (under 5°C) will become fully useable if slowly acclimatised up to working temperature (approx 20°C)</p>	
Preparation of surfaces	
<p>Clean surfaces and ArmaFlex Ultima surface with Armaflex Cleaner.            Compatibility with bases:</p> <ul style="list-style-type: none"> <li>• Very good adhesion to metallic surfaces.</li> <li>• The adhesive's compatibility with colour coated surfaces needs to be tested.</li> <li>• Incompatible with asphalt, bitumen, red lead (linseed oil-based), polystyrene and plasticated PVC</li> </ul>	
Working time at 20 °C	
Wet adhesion time	Up to 2 minutes
Drying time	2 min
Contact adhesion	10 - 15 mins
Setting	24 hours
The open time depends on the quantity as well as indoor climate conditions. Before operating plant the setting time needs to be allowed to elapse.	
Other technical features	
Flash point	approx -17 °C
Explosion limits	<b>Lower:</b> approx 1.1 Vol %, <b>Upper:</b> approx 11.5 Vol %
Hazard class	Highly flammable, Regulation of inflammable liquids.
Ageing stability	Very good
Resistance to weathering	Very good
Recycling	Allocation of a waste code number, according to the European Waste Catalogue, should be carried out in agreement with the regional waste disposal company. For details see relevant Safety Data Sheet. Packaging must be emptied of all residues. Packaging with traces of cured product can be recycled. Packaging with uncured product must be recycled into new product.
Transport classes	Depending on the type of transport

## ARMAFLEX RS850



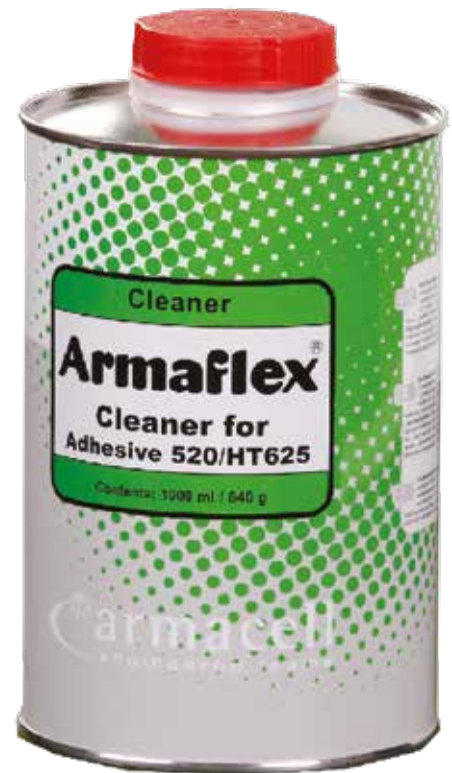
Code	Description	Pieces/carton	£/pc
ADH-RS850/0.5	ArmaFlex RS850 0.5 Litre can	6	25.44



# ArmaFlex Cleaner

## SURFACE CLEANER FOR ARMAFLEX INSTALLATIONS

- Ensures a clean surface before the use of ArmaFlex® Adhesives
- Removal of dirt from surfaces
- Cleaning of brushes and tools contaminated with ArmaFlex® adhesive



<b>ARMAFLEX Cleaner</b>	
Special cleaner for use with all ArmaFlex adhesives	
<b>Colour</b>	Clear
<b>Material special info</b>	Liquid
<b>Applications</b>	Cleaning of surfaces where ArmaFlex is to be installed.
<b>Assembly</b>	To ensure a perfect adhesion all contaminated surfaces, including ArmaFlex, must be cleaned. In addition the cleaner can be used to surfaces where ArmaFinish 99 is being applied.
<b>Remarks</b>	Can also be used to clean tools.

## TECHNICAL DATA

Technical features	
<b>Storage &amp; shelf life</b>	12 months sealed in original container. Keep container tightly closed in a cool, well ventilated place. Protect from heat & direct sunlight. Do not store together with explosive substances or spontaneously combusting substances.
<b>Preparation of surfaces</b>	Clean surfaces and ArmaFlex surface with ArmaFlex Cleaner. Compatibility with bases: <ul style="list-style-type: none"><li>• Very good adhesion to metallic surfaces.</li><li>• The adhesive's compatibility with colour coated surfaces needs to be tested.</li><li>• Incompatible with asphalt, bitumen and red lead (linseed oil-based)</li></ul>
<b>Flash point</b>	approx -20 °C
<b>Explosion limits</b>	Lower: approx 1% Vol, Upper: approx 13 % Vol. Regulation of inflammable liquids.
<b>Recycling</b>	Allocation of a waste code number, according to the European Waste Catalogue, should be carried out in agreement with the regional waste disposal company. For details see relevant Safety Data Sheet. Packaging must be emptied of all residues. Cans must be emptied prior to recycling. Cans containing adhesive must be recycled into new product.
<b>Transport classes</b>	Dependent on the transport sector

## ARMAFLEX CLEANER



Code	Description	Pices/carton
CLEANER/1.0	Special cleaner for use with ArmaFlex Adhesive	4